

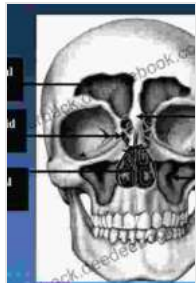
Diseases of the Nose, Sinuses, and Skull Base: A Comprehensive Guide

The nose, sinuses, and skull base are all interconnected structures that play important roles in our overall health. The nose helps us to breathe, smell, and filter out harmful particles from the air. The sinuses are air-filled cavities located within the skull that help to warm and moisten the air we breathe. The skull base is the bony structure that forms the floor of the skull and provides support for the brain and other vital structures.

Diseases of the nose, sinuses, and skull base can cause a wide range of symptoms, from mild discomfort to life-threatening infections. Some of the most common diseases of these structures include:

- **Sinusitis:** Sinusitis is an inflammation of the sinuses. It can be caused by a variety of factors, including allergies, infections, and structural abnormalities. Symptoms of sinusitis may include facial pain, nasal congestion, and discharge, and headaches.
- **Nasal polyps:** Nasal polyps are soft, noncancerous growths that can form in the nose or sinuses. They can cause nasal congestion, obstruction, and loss of smell.
- **Skull base tumors:** Skull base tumors are abnormal growths that can occur in the skull base. They can cause a variety of symptoms, depending on their size and location. Symptoms may include headaches, vision problems, facial numbness, and difficulty swallowing.

The causes of diseases of the nose, sinuses, and skull base vary depending on the specific disease. However, some of the most common causes include:



Rhinology: Diseases of the Nose, Sinuses, and Skull

Base by Jason Whiteley

★★★★☆ 4.2 out of 5

Language : English

File size : 113672 KB

Text-to-Speech : Enabled

Screen Reader : Supported

Enhanced typesetting : Enabled

Print length : 2114 pages

Paperback : 143 pages

Item Weight : 14 ounces

Dimensions : 7.6 x 0.33 x 10.24 inches

FREE

DOWNLOAD E-BOOK



- **Allergies:** Allergies are a common cause of sinusitis and nasal polyps. Allergies occur when the immune system overreacts to a foreign substance, such as pollen, dust, or pet dander. This can lead to inflammation and swelling of the nasal passages and sinuses.
- **Infections:** Infections are another common cause of sinusitis and skull base tumors. Infections can be caused by bacteria, viruses, or fungi. In some cases, infections can spread from the nose or sinuses to the skull base.
- **Structural abnormalities:** Structural abnormalities of the nose, sinuses, or skull base can also lead to disease. These abnormalities can be present at birth or they can develop later in life. Structural abnormalities can make it difficult for mucus to drain from the sinuses,

which can lead to sinusitis. They can also put pressure on the skull base, which can lead to tumors.

The symptoms of diseases of the nose, sinuses, and skull base vary depending on the specific disease. However, some of the most common symptoms include:

- **Facial pain:** Facial pain is a common symptom of sinusitis and skull base tumors. The pain may be located in the forehead, cheeks, or around the eyes. It may be constant or it may come and go.
- **Nasal congestion:** Nasal congestion is another common symptom of sinusitis and nasal polyps. Nasal congestion can make it difficult to breathe through the nose. It may also cause a feeling of fullness or pressure in the nose.
- **Nasal discharge:** Nasal discharge is a common symptom of sinusitis. The discharge may be clear, white, yellow, or green. It may be thick or thin.
- **Loss of smell:** Loss of smell is a common symptom of nasal polyps and skull base tumors. Loss of smell can make it difficult to enjoy food and beverages. It can also make it difficult to detect dangerous odors, such as smoke or gas.
- **Headaches:** Headaches are a common symptom of skull base tumors. The headaches may be severe and they may not respond to over-the-counter pain relievers.
- **Vision problems:** Vision problems are a common symptom of skull base tumors. The vision problems may include blurred vision, double vision, or loss of vision.

- **Facial numbness:** Facial numbness is a common symptom of skull base tumors. The numbness may be located on one side of the face or it may affect both sides.
- **Difficulty swallowing:** Difficulty swallowing is a common symptom of skull base tumors. The difficulty swallowing may be mild or it may be severe.

The diagnosis of diseases of the nose, sinuses, and skull base is based on a combination of the patient's symptoms and a physical examination. The doctor may also order one or more of the following tests:

- **Nasal endoscopy:** A nasal endoscopy is a procedure in which a thin, flexible tube with a camera on the end is inserted into the nose. This allows the doctor to visualize the inside of the nose and sinuses.
- **CT scan:** A CT scan is an imaging test that uses X-rays to create detailed cross-sectional images of the nose, sinuses, and skull base.
- **MRI scan:** An MRI scan is an imaging test that uses magnets and radio waves to create detailed images of the nose, sinuses, and skull base.

The treatment of diseases of the nose, sinuses, and skull base depends on the specific disease. Treatment options may include:

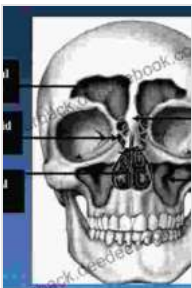
- **Medical therapy:** Medical therapy is often the first line of treatment for sinusitis and nasal polyps. Medical therapy may include antibiotics, antihistamines, and nasal sprays.
- **Surgery:** Surgery is sometimes necessary to treat sinusitis, nasal polyps, and skull base tumors. Surgery can be used to remove

blockages, repair structural abnormalities, and remove tumors.

- **Radiation therapy:** Radiation therapy is a type of cancer treatment that uses high-energy radiation to kill cancer cells. Radiation therapy may be used to treat skull base tumors.
- **Chemotherapy:** Chemotherapy is a type of cancer treatment that uses drugs to kill cancer cells. Chemotherapy may be used to treat skull base tumors.

The prognosis for diseases of the nose, sinuses, and skull base depends on the specific disease. The prognosis is generally good for sinusitis and nasal polyps. The prognosis for skull base tumors is more variable and depends on the size, location, and type of tumor.

Diseases of the nose, sinuses, and skull base can cause a wide range of symptoms and can have a significant impact on a person's quality of life. Early diagnosis and treatment are important for achieving the best possible outcome. If you are experiencing any of the symptoms of diseases of the nose, sinuses, or skull base, see your doctor for an evaluation.



Rhinology: Diseases of the Nose, Sinuses, and Skull

Base by Jason Whiteley

★★★★☆ 4.2 out of 5

Language : English

File size : 113672 KB

Text-to-Speech : Enabled

Screen Reader : Supported

Enhanced typesetting: Enabled

Print length : 2114 pages

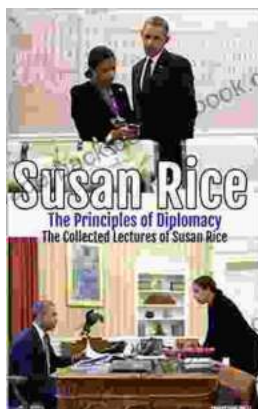
Paperback : 143 pages

Item Weight : 14 ounces

Dimensions : 7.6 x 0.33 x 10.24 inches

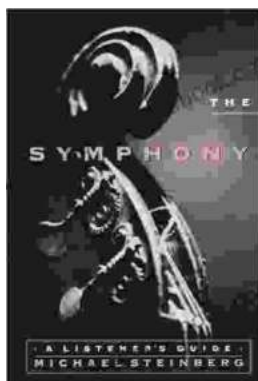
FREE

DOWNLOAD E-BOOK



Susan Rice: The Principles of Diplomacy

Susan Rice is a leading expert on diplomacy. She has served as the U.S. Ambassador to the United Nations and as National Security Advisor. In these roles, she...



The Symphony Listener's Guide: Unlocking the Beauty of Orchestral Music

Immerse yourself in the captivating world of symphonic music with our comprehensive Symphony Listener's Guide. Designed to illuminate the intricate layers of...