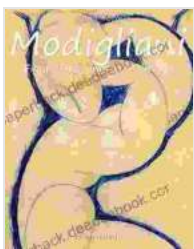


Modigliani Figure Drawings: Intimate Insights into the Artist's Unique Style

Amedeo Modigliani, the enigmatic artist of the early 20th century, is renowned for his distinctive elongated figures and sensual depictions of the human form. His figure drawings, in particular, offer a profound glimpse into his artistic vision and masterful technique. This article delves into the captivating world of Modigliani's figure drawings, exploring their unique characteristics and artistic significance.

Elongated Figures: A Defining Characteristic

One of the most striking features of Modigliani's figure drawings is their elongated proportions. These figures often possess slender, attenuated bodies and necks, creating an ethereal and otherworldly quality. This elongation serves multiple purposes:



Modigliani: Figure Drawings & Paintings (Annotated)

by Chase C. Mooney

★★★★★ 5 out of 5

Language	: English
File size	: 5520 KB
Text-to-Speech	: Enabled
Screen Reader	: Supported
Enhanced typesetting	: Enabled
Print length	: 85 pages
X-Ray for textbooks	: Enabled
Paperback	: 30 pages
Item Weight	: 3.84 ounces
Dimensions	: 8.5 x 0.08 x 8.5 inches

FREE

DOWNLOAD E-BOOK



- **Expressive Emphasis:** The elongated forms allow Modigliani to convey a sense of melancholy, vulnerability, and longing.
- **Symbolic Interpretation:** Some believe the elongation represents the artist's inner struggles, his desire to transcend the physical realm.
- **Aesthetic Appeal:** The elongated figures create a visually pleasing effect, evoking a sense of grace and elegance.

Sensuous Depictions: Capturing the Essence of Humanity

Modigliani's figure drawings are renowned for their sensual and intimate portrayal of the human form. He captures the subtle curves and textures of the body, conveying a profound understanding of its beauty and fragility. His subjects often gaze out at the viewer with enigmatic expressions, inviting them into a realm of introspection and contemplation. Through his sensitive depictions, Modigliani reveals the emotional depth and vulnerability of his models.

Influence of African Art and Primitive Aesthetics

Modigliani's exposure to African art and primitive aesthetics had a significant impact on his figure drawings. The elongated features, simplified forms, and exotic poses found in African masks and sculptures influenced his unique style. By incorporating these elements, Modigliani sought to convey a sense of timelessness and universality in his art.

Technical Mastery: Line, Form, and Color

Modigliani's figure drawings showcase his exceptional technical skills. His use of line is both delicate and expressive, capturing the subtle contours of the body. The interplay of light and shadow creates a sense of depth and

volume. Although primarily working in black and white, Modigliani occasionally introduced subtle washes of color, adding warmth and emotion to his works.

The Importance of Drawing: A Foundation for Painting

Drawing was of paramount importance to Modigliani, serving as the foundation for his paintings. He often executed numerous sketches before embarking on a canvas, using these drawings to refine his compositions, explore different poses, and capture the essence of his subjects.

Modigliani's figure drawings are therefore valuable works of art in their own right, offering insights into his artistic process and development.

Annotated Examples

To illustrate the captivating nature of Modigliani's figure drawings, let us examine a few annotated examples:

1. **Reclining Nude (1917):** This drawing depicts a reclining nude figure with elongated limbs and a serene expression. The gentle curves of

her body convey a sense of comfort and vulnerability.



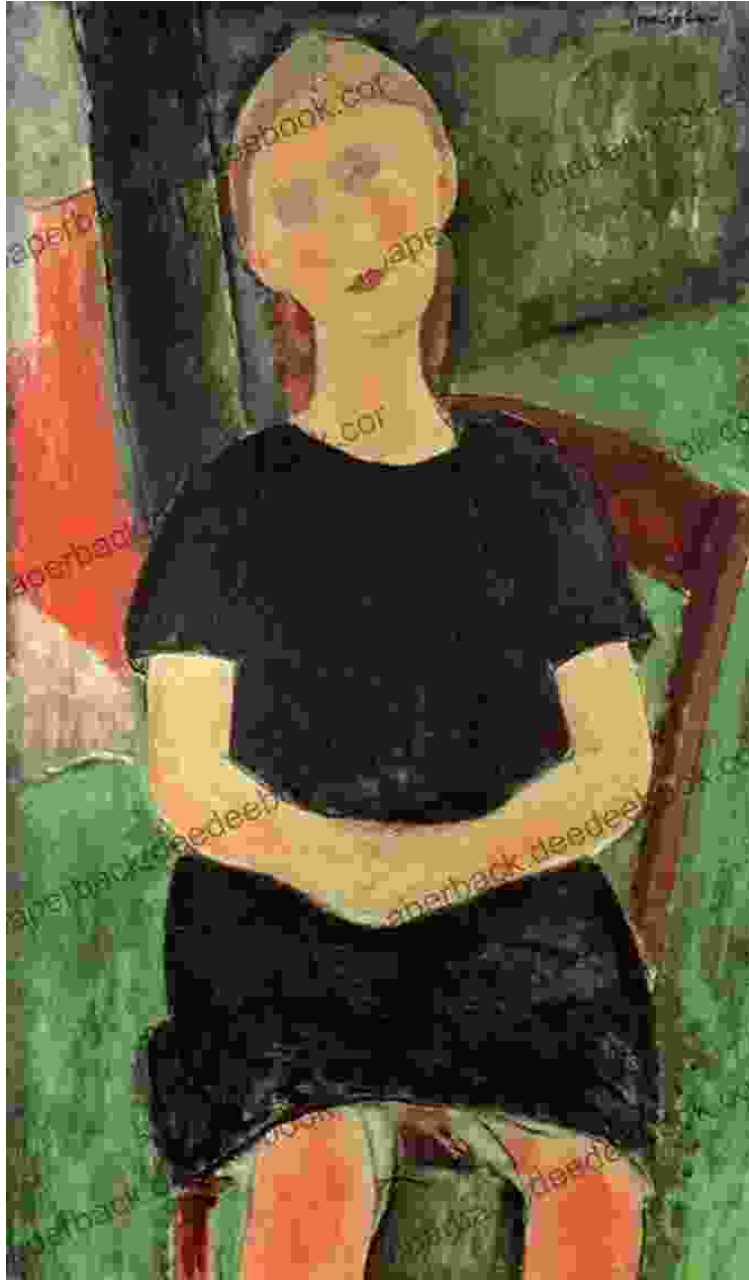
2. **Head of a Woman (1912):** This drawing captures the enigmatic gaze of a woman with almond-shaped eyes and a slightly tilted head. The elongated neck and simplified facial features evoke a sense of mystery

and contemplation.



3. **Seated Woman (1918):** This drawing depicts a seated woman with elongated limbs and a slightly hunched posture. The intricate cross-hatching creates a sense of depth and texture, while the subtle

shading of her face conveys a range of emotions.



Modigliani's figure drawings are a testament to his exceptional artistic vision and technical mastery. Through elongated figures, sensual depictions, and the influence of African art, he created a unique and compelling style that continues to captivate audiences today. These drawings offer intimate insights into his artistic process and reveal the profound understanding of the human form that characterized his work.

Modigliani's figure drawings stand as timeless masterpieces, bridging the gap between art and humanity, and inviting us to contemplate the beauty, vulnerability, and universality of the human experience.

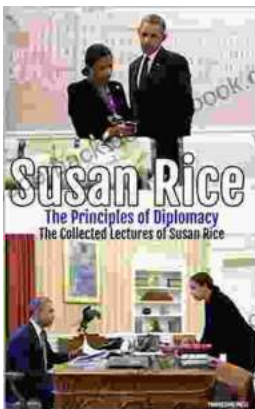


Modigliani: Figure Drawings & Paintings (Annotated)

by Chase C. Mooney

★★★★★ 5 out of 5

Language : English
File size : 5520 KB
Text-to-Speech : Enabled
Screen Reader : Supported
Enhanced typesetting : Enabled
Print length : 85 pages
X-Ray for textbooks : Enabled
Paperback : 30 pages
Item Weight : 3.84 ounces
Dimensions : 8.5 x 0.08 x 8.5 inches



Susan Rice: The Principles of Diplomacy

Susan Rice is a leading expert on diplomacy. She has served as the U.S. Ambassador to the United Nations and as National Security Advisor. In these roles, she...



The Symphony Listener's Guide: Unlocking the Beauty of Orchestral Music

Immerse yourself in the captivating world of symphonic music with our comprehensive Symphony Listener's Guide. Designed to illuminate the intricate layers of...